

Friends of Camp Zoe

at

ECHO BLUFF STATE PARK



Friends of Camp Zoe

visits

Echo Bluff State Park*

May 15, 2016

* Our many thanks to Current River State Park Superintendent, Jim Newberry, for his keen insights, great patience and for being so very generous with his time.



The front view of the new 'Lodge'

The huge wrap-around deck has a spectacular view of Echo Bluff





One of two new 'shelters'. Missouri State Parks wanted to use the names of the original Camp Zoe shelters...until they found out that they were simply called the "Old Shelter" and 'New Shelter'!

Walking down the original stone path



The new Bioswale, designed to remove silt and pollution from surface runoff water.



The new park is designed to be used year-round. Just imagine sitting in front of this massive new fireplace watching the snow dust the trees over Echo Bluff...with a hot toddy in hand, of course!

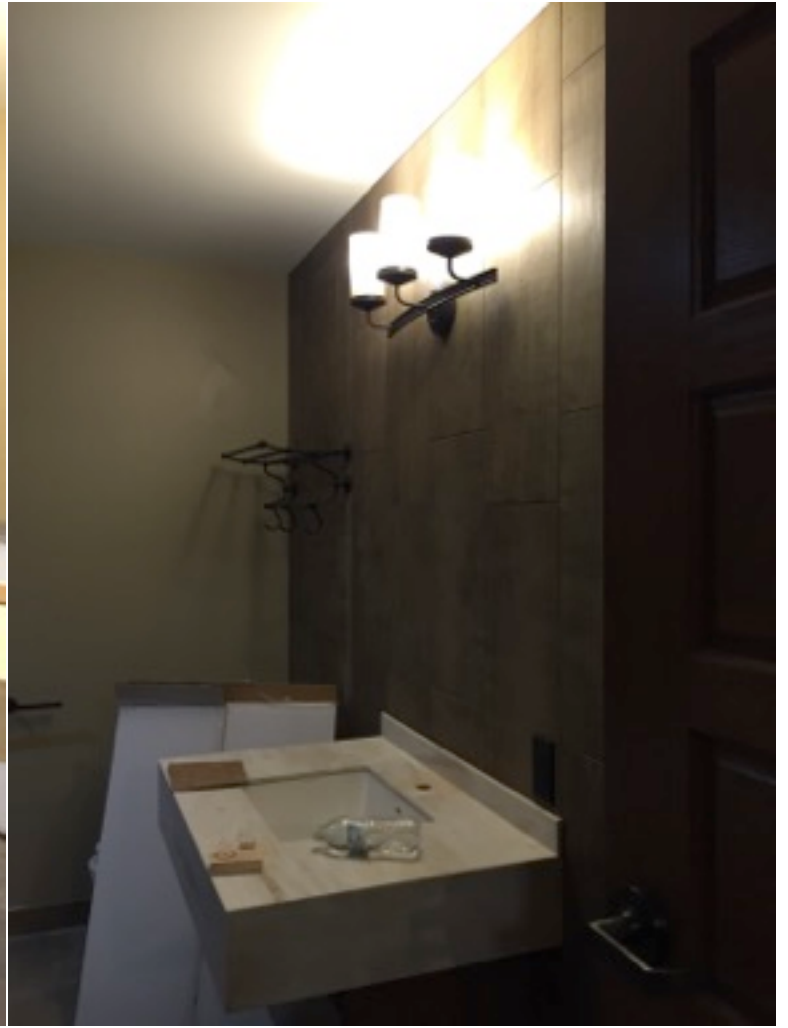




The new cabins - singles, doubles and duplexes, each with it's own stone fireplace.

And a nice touch...each door has its own 'tree'.





The bathrooms look like they're going to have a 'rustic-spa' feel. This one is in a two bedroom/two bath suite in the new lodge.

And even with the plastic film still protecting the window, the view is pretty amazing!



The amphitheater - Huge by state park standards, with a great view of the pond and lodge. Love the attention to detail...check out the fantastic handrails!





The new bridge.

Okay, it's pretty big...but the flood waters in December 2015 did reach about 3/4 the way up the pilings!

Spanning Sinkin' Creek, just about exactly where we used to cross on horseback when heading up to the far pasture, this bridge takes you to that now-terraced pasture made ready for every kind of camping. From tents to full hook-up RVs, it has 62 tricked-out sites. Beyond the pasture, there are 'primitive' walk-in camp sites for the traditionalists.





An incredible transformation for the always tranquil but rarely used spot by the spring behind the mess hall (which used to stand on the now grassy spot at the rear of this photo).

In the photo below, the open space of the horse lot and barn is just visible behind the truck. This new open, flagstone-paved area should get lots of use...we hear the concessionaire is really keen on barn weddings!

Can you see the original steps on the left in the picture above? They are working to save the stones surrounding the spring, also. There had been rainstorms during the week of our visit, so the usually crystal clear spring was full of silt and sand...but still beautiful.



Maintaining its great shape for more than eighty-five years - the original rock stile behind the mess hall.





This new pavilion at the top of the 'Camp Zoe' bluff was planned as a special event venue, with full banquet capabilities and equipment storage nearby - enough for a party with up to 200 guests!



Here, too, there is the incredible attention to detail - flora and fauna 'prints' in the colored and textured concrete flooring.





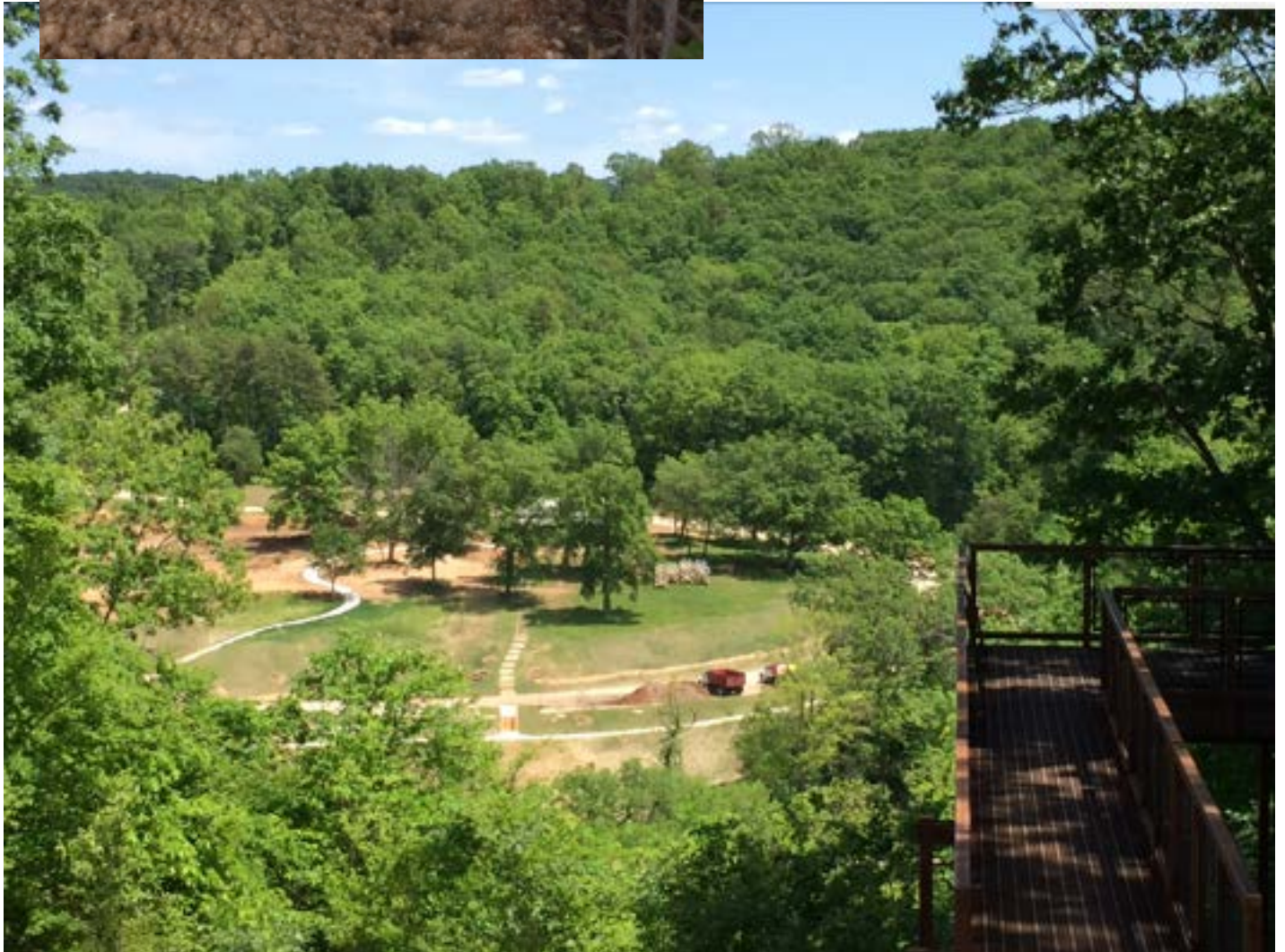
This new pavilion has a stunning view, too!

How awesome to be sitting around the fire ring, with Echo Bluff, Sinkin' Creek and the magnificent new lodge peeking through the trees in the distance.



And then there's the cherry on top - an observation walkway, cantilevered out over the bluff, with the perfect view of the Camp Zoe Lodge!

Breathtaking!





But then again, this might actually have been the cherry on top - finding the mess hall water pump, still seemingly conjoined with it's pal the loudspeaker after all these years.

Can't wait to get them cleaned up and ready to be part of our Camp Zoe Memories exhibit in the restored Camp Zoe Lodge!